

FLYPAPER

November 2021

Upstream Looking

November 18 WFFF ZOOM General Meeting 6:30p
Presentation 7:00p - 8:30p



Advanced Chironomid Techniques

Throughout the open water season Chironomids are the number one item in the diet of trout in productive stillwaters. Most fly fishers agree on the importance of this hatch but a disproportionate amount feel confident imitating this challenging food source. Phil is going to review some existing tactics, the life cycle and appropriate fly patterns but then will get into deep water indicator fishing, floating line/longer leader tactics, slow sinking line tactics as well as fast sinking line tactic. This program will be of great assistance to anyone wishing to improve their skill and understanding when tying and fishing Chironomids.

Watch your inbox for information about the upcoming Zoom Meeting

December 2	WFFF ZOOM	Board Meeting
December 16	WFFF ZOOM	General Meeting - Fish Tale Share Night - See Page 9
January 6	WFFF ZOOM	Board Meeting

MESSAGE FROM THE PREZ

Greetings all WVFF members. Hope all is well as we hunker down for late Fall and eventually Winter. WVFF has some serious business to conduct in the next few months. Here's 2 Hot Issues that need your attention:

ELECTION OF OFFICERS:

WVFF will elect officers for 2022 in January. You may recall that your present officers were elected for 2020 and agreed to continue through 2021 due to Covid preventing in-person meetings. At least some of us now want to hand over to new folks.

Elected positions of President, Vice President, and Secretary will be vacant in January, and we need candidates. Board consists of elected and appointed officers and committee chairs:

Position	2021 Incumbent	2022 Status
President	Bob Bartlett	Vacant
Vice President	Steve Aguilu	Vacant - Steve will run for President
Secretary	Vacant	Vacant
Conservation Chair	Bruce Merighi	Bruce willing to continue
Outings Chair	Al Smith	Al willing to continue
Programs Chair	Gary Anderson	Gary willing to continue
Membership Chair	Bruce Phillips	Bruce willing to continue
Ghillie	Wayne Steele	Wayne willing to continue

We therefore need candidates for Vice President and Secretary, plus, should you want to run for President too, throw your hat in the ring.

Should you wish to run or wish to nominate another WVFF member for one of the elected offices, just contact an officer or Board Member, and we'll get you on the ballots. We need you as members to participate in leadership of the club.

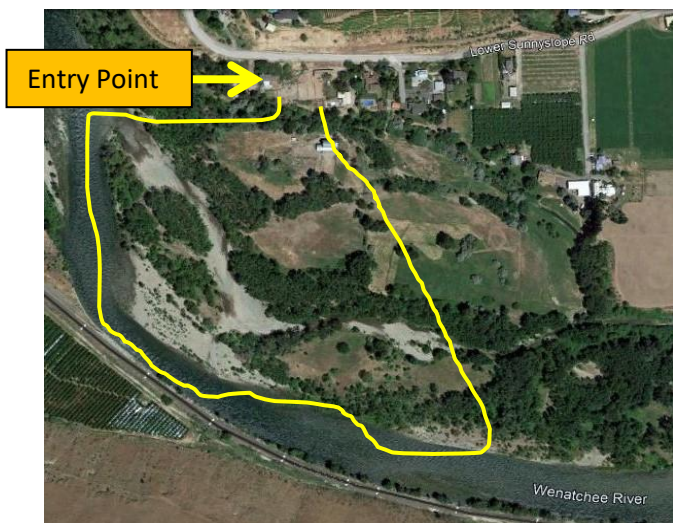
MEMBER DUES WILL BE COLLECTED JANUARY, 2022:

WVFF Membership dues for 2022, \$35 per member/family, will be collected starting in December, 2021. If we're able to have a banquet/fundraiser in January, we hope to enable you to utilize PayPal to pay for both membership dues and banquet on our new website. Please keep an eye out for information soon on how you can pay your dues to keep the club solvent.

Bob Bartlett, 2020 & 2021 President

Providing For Future Fish

Recently, a fall tour of four local fishery improvement projects revealed a great conservation program underway. Each project was a recipient of grant funding from the Salmon Recovery Board, Yakima Tribe and/or various other groups/agencies. Millions of dollars are being provided for fisheries projects up and down the Wenatchee drainage and most of us drive by them without a second thought. That's if we are even aware of their existence. This piece is to introduce you to the four Chelan Co. 2020 grant winning projects, in the hope that you'll be able to appreciate the fantastic work that is occurring in our back yard. Work that that is hopefully making it better for endangered fish species, by providing better habitat and rearing locations that will hopefully evolve into sustainable fish runs. Runs that are no longer threatened with extinction. Runs that are viable and fishable.



Sleepy Hollow Site



Monitor Side Channel

Sleepy Hollow - Floodplain Acquisition

Chelan-Douglas Land Trust acquired 37 acres of floodplain at River Mile (RM) 2.7-3.2 of the lower Wenatchee River mainstem.

- This is the largest undeveloped floodplain in the lower Wenatchee and is only 10 minutes from downtown. The property includes 2,700 feet of riverfront, the inlets of two major seasonal channels, good riparian protection cover, and is 95% in the 100 year floodplain.
- All salmonid species in the Wenatchee Basin spend part of their life cycle in the lower mainstem, where human development, both highway and railroad have taken up much of the historic floodplain and channel migration zone. This was the final opportunity to protect a crucial piece, and is the keystone to future acquisitions with the two other owners of the connected floodplain.

- The previous landowner was a large developer that had obtained preliminary approval from Chelan Co. for a 6 lot cluster subdivision located entirely within the floodplain.
- The threat to this highly functional floodplain was real and imminent.
- The project would also provide public access to 25' of fishing easements held by the WDFW along the entire frontage, that at present are not accessible except from the river.
- In order to begin the healing process of this x-pasture site, over 2,000 native species of plants have been planted in the riparian zone which was heavily scoured during a major winter flood in the early 1990's.
- Future components of this project that are still underway are:
 - the installation of footpaths
 - fencing
 - educational signage to accommodate future school groups touring the site as part of their riverside field trips.

Monitor Side Channel - Restoration

Located at RM 5.3, on the south side of SR #2, a mile west of Monitor bridge and just upstream from the large gravel parking lot. The Chelan County Natural Resources Department was awarded grants to construct a series of nine large wood structures, six boulder clusters and installment of riparian vegetation along 2,300 feet of side channel.

They met their objectives to:

- Improve juvenile summer and winter rearing habitat conditions for ESA (Endangered Species Act) listed fish species.
- Increase instream habitat complexity of side channels.
- Improve water conditions during summer and winter flows.
- Improve the condition of riparian plant community.
- Minimize hydraulic impacts on adjacent human infrastructure.

The project area included a perennially connected 2,200 foot channel that was originally maintained to supply water to the Gunn Ditch/Canal via the Pioneer Diversion Dam for agricultural purposes. Despite being perennially connected, the channel maintained a planar, shallow, and cobble structure with areas of intermittent riparian vegetation that provided limited shading.

The focus of this project was to address the primary limiting factor and the highest priority ecological concern in the lower Wenatchee by implementing shallow homogenous side channels, and installing native vegetation to increase riparian cover and shading along the channel margins. The project improved summer and winter juvenile rearing habitat, created refuge during high flows and created refuge for overwintering habitat for all life stages of salmonids.



Skinny Creek



Minnow Creek Bridge

Skinny Creek - Restoration

This impressive Yakima Nation project is on USFS Road 7906, 10.3 miles West of Leavenworth via SR #2. Skinny Creek is the only known tributary to Chiwaukum Creek and it supports a sizable steelhead and salmonid population.

The project has:

- Moved the main channel of Skinny Creek onto a Dept. of Transportation wetland mitigation site, thus moving the creek about 70 yards away from SR #2.
- Increased the channel length of the creek from 1,830 feet to 2,060 feet.
- Imported over 600 cubic yards of streambed substrate and created 32 meanders and pools.
- Added 109 wood contacts with the stream channels.
- Introduced 315 logs etc. to the adjacent floodplain to create surface roughness thus diminishing erosion during times of high water.

Minnow Creek - Barrier Corrections

Drive past Fish Lake, then up the Chiwawa River drainage 9.5 miles then turn onto USFS Road 6210 and enjoy the forest views up the Chikamin Creek drainage for a mile. Finally you'll see something strange. The first bridge built on the Wenatchee Okanogan National Forest that was not built by the USFS.

The Cascade Columbia Fisheries Enhancement Group, now renamed the Cascade Fisheries Group vigorously worked with the USFS to correct three fish passage problems (poorly designed culverts) in 2020. Unfortunately the monster culvert at the bottom of the drainage could not be replaced and a bridge had to be built.

The project:

- Opened up 3.75 miles of spawning and rearing habitat for Steelhead, Bull Trout and Salmonids.
- Allows for fish passage at all flows and life stages.
- Provides for natural stream processes such as sediment and wood transport.

A Message of Hope

By Daniel Hammond

We could all use a message of *hope* these days. If you could use some hope, please read on ... A steelhead, estimated to be 18" long, was found in a small pond last May behind a Beaver Dam Analog (BDA) on Potato Creek. Yes! It is true! Some background and details follow...



Steelhead ↑



Nocturnal Visitor

During the summer of 2020 five volunteers from WVFF assisted Trout Unlimited with cutting materials and building a number of artificial beaver dams (BDAs) on Potato Creek, a small tributary of the Entiat River. Those volunteers were: Gary Anderson, Bob Bartlett, Dan Hammond, Bruce Merighi and his wife, Jain Rogers. The creek just barely trickled in the area the BDAs were built (maybe only an inch deep at best). Further downstream the creek disappeared altogether and ran subsurface beneath the cobbles.

Last May a US Forest Service technician returned to the Potato Creek project site to conduct maintenance on the BDAs, which included adding additional basket weave material. The technician's jaw dropped when he saw an eighteen-inch 'spawned-out' steelhead swimming in a pond that was created by one of the artificial beaver dams. There are a number of factors with this discovery that are truly amazing:

- 1) In only ten months after construction of the BDAs, a steelhead made its way upstream to rest in one of ponds that were created by the dams. There were no such ponds prior to building these BDAs.
- 2) The pond was only nine inches deep in May of the discovery. The maximum depth of the pond was estimated at eleven inches deep in March, two months prior to the discovery.
- 3) Thirteen inches of sediment had accumulated behind the dam of this particular pond by May according to Trout Unlimited. *Note: one of the goals of building BDAs is to create ponding and the accumulation of sediment that will help reduce incised streams and reconnect the stream to the floodplain.*
- 4) This steelhead had to navigate and pass through no less than **EIGHT** other BDAs downstream to finally rest in this pond. This particular pond is located about one half mile upstream from the Entiat River Road! *Note: The creek flows, on the surface, into the Entiat River during the spring but there is still a portion of the stream that disappears subsurface downstream of the BDAs during the late summer.*

It is noteworthy to also mention that Trout Unlimited installed a time lapse/motion activated game camera at this BDA to monitor water levels and to capture pictures of other game that pass by the pond. Other game, caught on camera, include a bear, a cougar and a coyote.

No one expected a steelhead to be swimming in this pond (where there wasn't even a pond ten months earlier). Yes, a message of **HOPE!**



Journey of the African Yakima Queen

By Bruce Merighi

There are times when you must go fishing. Even though I recently returned from an Alaskan Silvers trip, I still craved a quiet local fishery. So I hit the White River to enjoy my 3 wt. and some Cutthroats but alas, they alluded me. Determined not to end the season on such a note I decided to squeeze in one more fishing trip before I stored my fly gear.

We all know that the Yakima gets fished hard by all area codes and can be a challenging fishery upon which to score. So I summoned up some expertise from willing club members Rob and Fred to find a stretch of river that might be productive during this time of October Caddis. It was decided to put in below Thorp and float down to Irene Rinehart Riverfront Park.

As you can see from the picture below the 'put in' was the first challenge. It's not the flattest ramp on the river... Once the drift boat was safely inserted into the almost fluid drainage ditch, we faced our second challenge. To solve this conundrum Fred thought like an ancient Egyptian, and placed logs on the boats path and created rollers. Thus allowing us to push-pull-curse the boat forward through the narrow fifty yards, before hitting actual flowing water. Upon arrival we felt like Hepburn and Bogart having moved the African Queen through that swamp.



Is the correct term 'PUT IN' or 'DROP IN' ?



RIVER ACCESS DITCH

This last fishing trip before the snow, was a trip of beautiful fall colors, a bald eagle, no other boats (maybe they knew something) osprey, heron and above all a trip of friendship. A trip where counting fish became unimportant, compared to working and relaxing with your buddies. We overcome adversities. The put-in, the low flow that required portages, floating then retrieving a full fly box and hoisting the not so light drift boat up the three foot embankment that was the 'take out'. It was a fun day and I'm up for doing it again next year.



SKINNY WATER



The "TAKE-OUT"

December 16th General ZOOM Meeting

Fish Tale Share Night

Is the story true or is it just another fish tale?



We do this every year and you're the presenter. This is your chance to show the membership what you did right in 2021 what you did wrong can stay home. Prepare your Power Points, pictures, maps, flies or anything to show the rest of us how great you did. It's all good fun. It doesn't need to be glossy and professional you just need to get organized and tell us what you did that was fishy and fun this year. It can be five minutes or twenty minutes long, it's your call. A special ZOOM sign-up/training will be provided prior to the event for those of us that don't speak Zoom-ese. Watch your inbox for more info.

WVFF October Board Brief

President's Report:

- September General meeting follow-up:
 - Had 18-19 members join Zoom program provided by Skip Morris who presented methods for fishing soft hackles, then tied a couple of flies.
 - Board agreed with continued Zoom membership meetings going forward.
- Web Site:
 - Have now engaged Patrick Hertzog of NW Web Development to review our website, fix or propose fixes for issues we've identified.
 - Authorized to spend up to six hours @\$85/hour on initial work.
- Election of Officers:
 - Nominating committee to be established.
 - Steve confirmed he'll run for '22 President but VP and Secretary slots are open.

Vice President's Report:

- Tentative reservation made at Wenatchee Country Club for Jan. 22, 2022 banquet.

Conservation Report:

- We have approximately \$1200 from the Bennion \$6271.24 donation.

Treasurer's Report:

- Checking/savings account balance \$9,519.
- Community Foundation investment (\$7,500) balance now \$7,900.

Outings Report:

Al Smith, Bruce Phillips, and Bob Bartlett met to formulate an outings plan for 2022.

- Schedule our usual trips (Quincy, Blue Lake, etc.) by January, so they're on the schedule for all members to see.
- Schedule some "long distance" trips like St. Joe River, ID, Bonaparte Lake, Blackfoot River, MT.
- Schedule more local venues like Big Twin in May, Jameson Lake in May/June.
- Engage club members to sponsor/schedule day trips with specific date/site/quantity of fishers.
- Per Board suggestions, Outings chair/team will send proposed plan to membership via email and will try to use Survey Monkey for survey of membership preferences.

Membership Report:

- Membership renewal notice will be sent to all members once website is functional.

Program Report:

- Gary's scheduled Jon Covich with Zoom program on fishing Columbia.



Your **FLY PAPER** is published monthly **Sept – May** by the Wenatchee Valley Fly Fishers P. O. Box 3687, Wenatchee, WA 98807-3687 The WVFF is a federally registered 501 (c) (3) non-profit organization incorporated in WA. Members are encouraged to submit sale items, articles and pictures to: bruce401@nwi.net